

Qualitative Needs Assessment

Date of Assessment: December 2007

Target Population: Nahr el Bared IDPs

Location: Beddawi Camp

Sample Size: 194 Families || Approximately 10% of the NBC IDPs in Beddawi Camp (1848 Families)

Methodology of Assessment:

This is a qualitative assessment based on the opinion of the affected population on their needs and a process of documentation of their perception on relief activities and provision.

The assessment aims at identifying the general mood of the affected population and tries to identify their perception of their own situation of displacement.

The needs identified in this assessment are only an indicator of the general direction of relief activities, and can only provide a general overview and figures about the quantitative needs of the affected population.

Yet this assessment does not give out any quantitative figures about the needs of the NBC IDPs in Beddawi.

Sample Details:

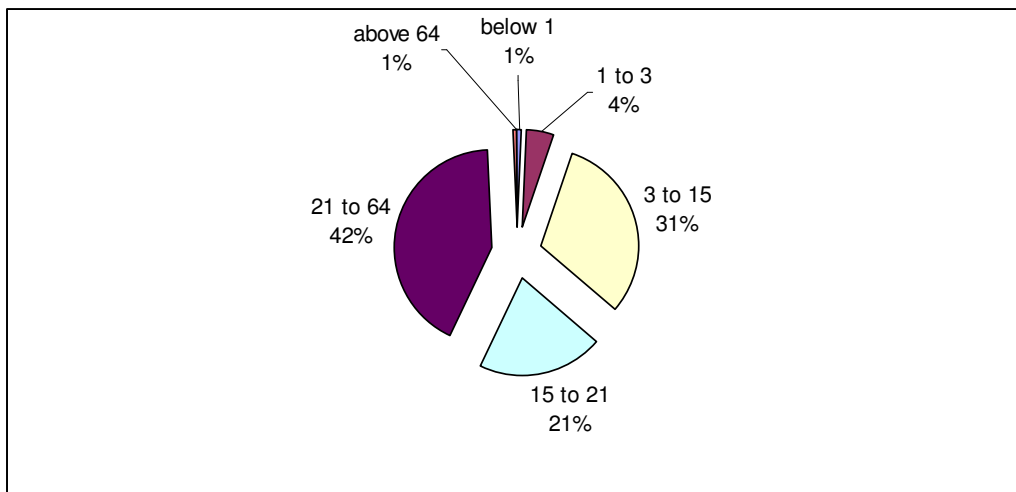
Interviewed Families: 194 || Approximately 10% of the NBC IDPs in Beddawi Camp (1848 Families)

Number of Persons: 1258

Females: 744 || 59%

Males: 513 || 41%

Age Structure of the interviewed family members



Families who have reported having at least one disabled family member: 14 || 7.2%

Families who have reported having at least one family member with a chronic disease: 131 || 67.5%

Families who have reported having at least one family member with a contagious disease: 28 || 14.4%

Economic Conditions of Interviewed Families

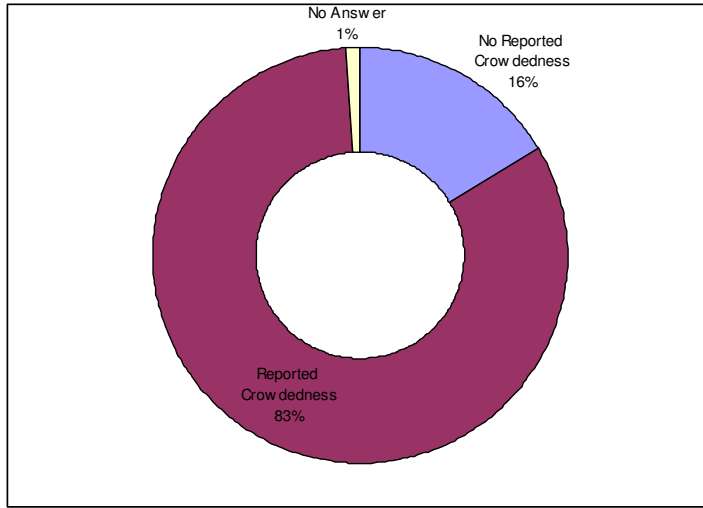
102 out of 194 (52.57%) families mentioned having no working family members.
92 out of 194 (47.44%) families reported having at least one working family member

Residence in Nahr el Bared before the displacement:

NBC New Camp: 108 Families; Approx 55.67%
NBC Old Camp: 86 Families; Approx 44.32%

Current Shelter Conditions

Crowdedness



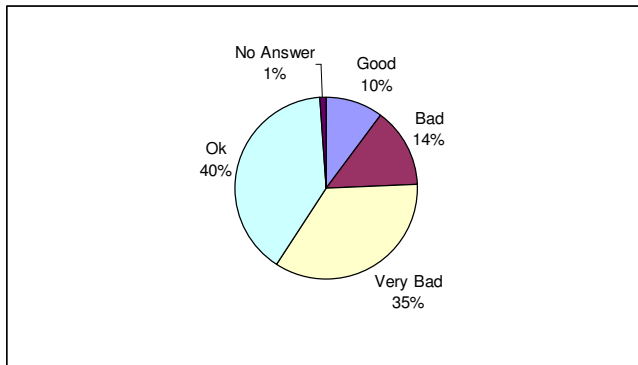
Families who have reported having crowded shelters have an average space per person ratio of 4.3 m2 per person

Families who did not report any crowdedness in their current shelters have an average space per person ratio of 10.89 m2 per person

General Space per Person Ratio of all interviewed families is: 4.78 m2 per person
Ratio of space per person inside gathering centres is about 3.18 m2 per person
Ratio of space per person inside self-rented apartments is about 6.79 m2 per person

Average number of persons per bathroom for all interviewed families is about 9.50 persons per bathroom

IDP's Evaluation of Shelter Conditions



Most of the Families who have reported having bad and very bad shelter conditions are located in gathering centres

Most of the Families who have reported having “Ok” and “Good Shelter” conditions are located in rented apartments

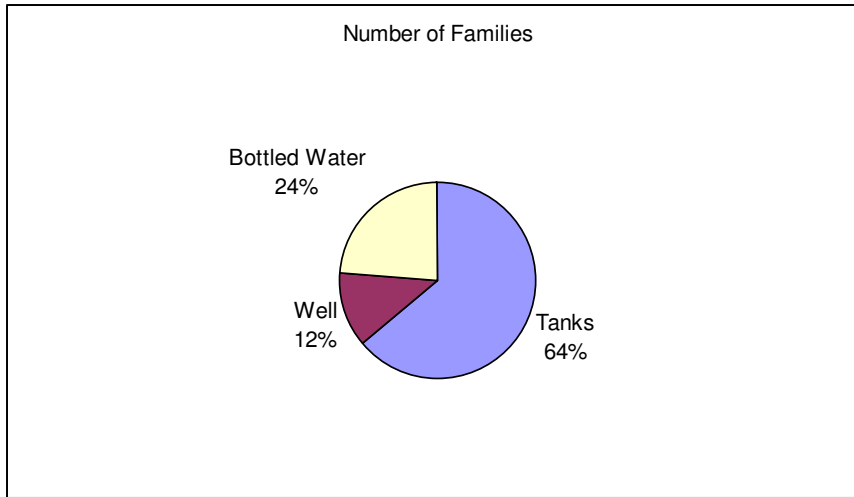
15% of interviewed families reported having high humidity in their current residence

Water Provision

Drinking Water

100% of interviewed families reported receiving drinking water

Drinking Water Sources



Drinking Water Sufficiency

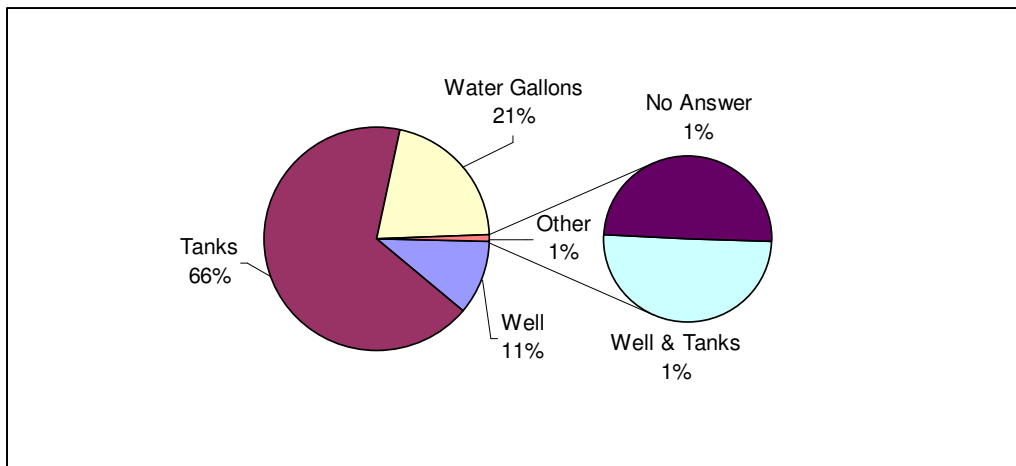
170 out of 194 families have reported that the received drinking water is not sufficient (87.6%)

24 out of 194 families have reported that the received drinking water is sufficient (12.37%)

Service Water

100% of interviewed families reported receiving service water

Service Water Sources



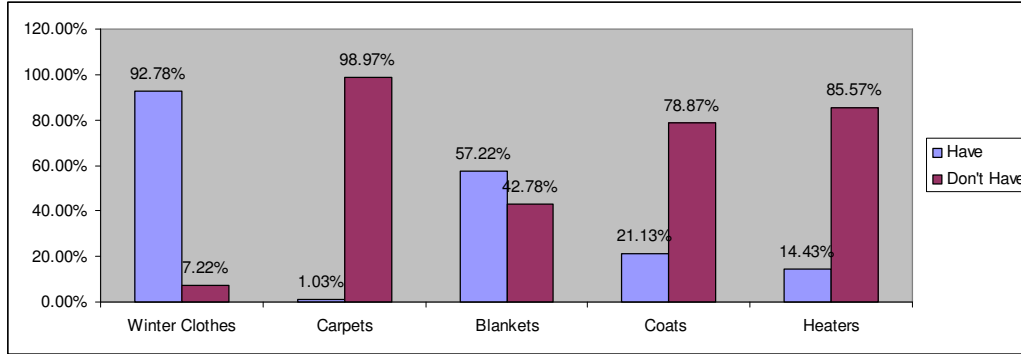
126 out of 194 families have reported that the received service water is not sufficient (65%)

68 out of 194 families have reported that the received service water is sufficient (35%)

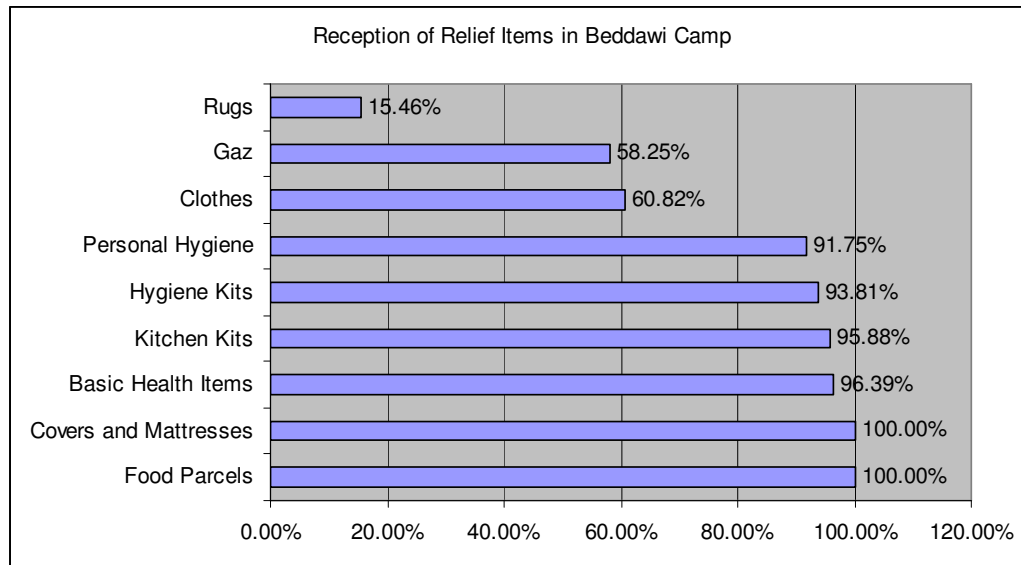
30% of interviewed families reported that there is discontinuity in water provision

Wintering

What do the IDPs in Beddawi have in terms of wintering items?



Reception of relief items



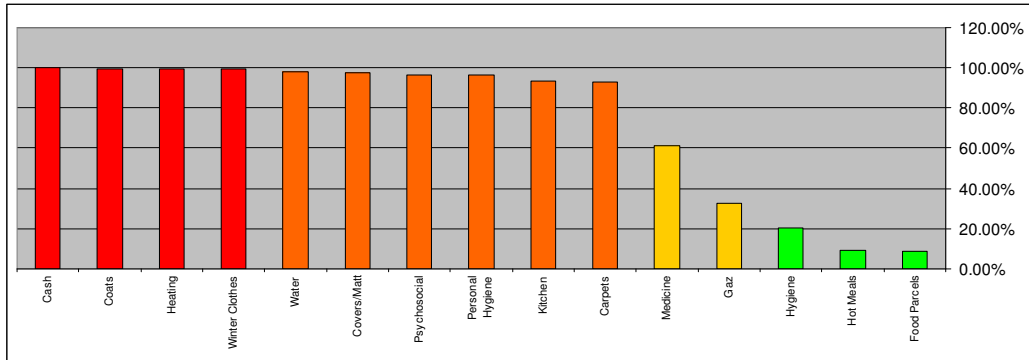
This graph indicates the outreach of relief distributions towards the NBC IDPs in Beddawi Camp,

We can see quite clearly that Food Parcels, Covers and Mattresses have been received by 100% of the interviewed population; while Basic Health items, Kitchen Kits, Hygiene Kits and Personal Hygiene Kits are being received by 91% to 97% of the interviewed families.

The outreach drops to 60% and below regarding items such as Clothes, Gaz and the lowest outreach being rugs

Yet, 94% of interviewed families reported to have witnessed a decrease in relief provision, after the opening of Nahr el Bared Camp

Identified Needs based on the opinion of NBC IDPs in Beddawi Camp



Food Parcels	8.76%
Hot Meals	9.28%
Hygiene	20.62%
Gaz	32.47%
Medicine	61.34%
Carpets	92.78%
Kitchen	93.30%
Personal Hygiene	96.39%
Psychosocial	96.39%
Covers/Mattresses	97.42%
Water	97.94%
Winter Clothes	99.48%
Heating	99.48%
Coats	99.48%
Cash	100.00%

The surge in needs might be a bit over estimated due to the fact that the majority of the interviewed families have mentioned having concerns due to the shift in attention of relief actors towards Nahr el Bared.

Nevertheless the need for winterization and for better shelter conditions is quite obvious, and the need for cash support indicates the need for more focus on economic support towards the Nahr el Bared IDPs.

The direction of relief needs to tackle the livelihood conditions of the NBC IDPs and needs to look further than the provision of basic needs, since till now the situation of displacement does not seem to be changing any time soon.